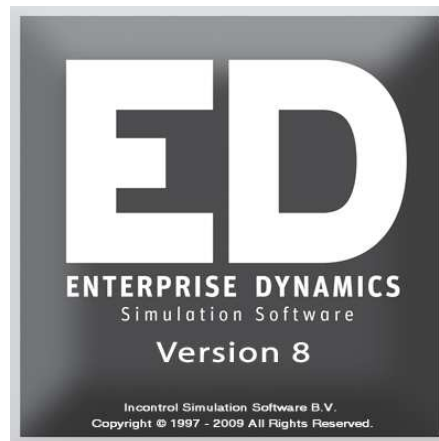


# Installation guide ED Educational student



Simulation Software / Installation guide

Enterprise Dynamics®

Copyright © 2010 Incontrol Simulation Software B.V. All rights reserved  
Papendorpseweg 77, 3528 BJ Utrecht, The Netherlands  
[www.IncontrolSim.com](http://www.IncontrolSim.com)



# INSTALLATION GUIDE ED EDUCATIONAL STUDENT

---

## 1.1 Introduction

Enterprise Dynamics (ED) can only be installed on computers running Microsoft Windows. It cannot be run directly on MacOS X except in windows emulation mode. This document describes how to install ED on Windows.

To install ED you need Administrator privileges. Some the documentation comes as PDF files, to read those you should download and install Adobe Acrobat Reader.

The ED Educational Student Version is identical to the ED Educational version used at school, except for a restriction on model size. Both have all features and atoms of ED Logistics Developer, the flagship of Incontrol Simulation Solutions.

The student version is limited to loading and saving models containing up to thirty atoms. Larger models can only be used at school. Thirty atoms is sufficient for most assignments and school projects, when in doubt contact your teacher.

## 1.2 Downloading the Enterprise Dynamics Educational Student Version

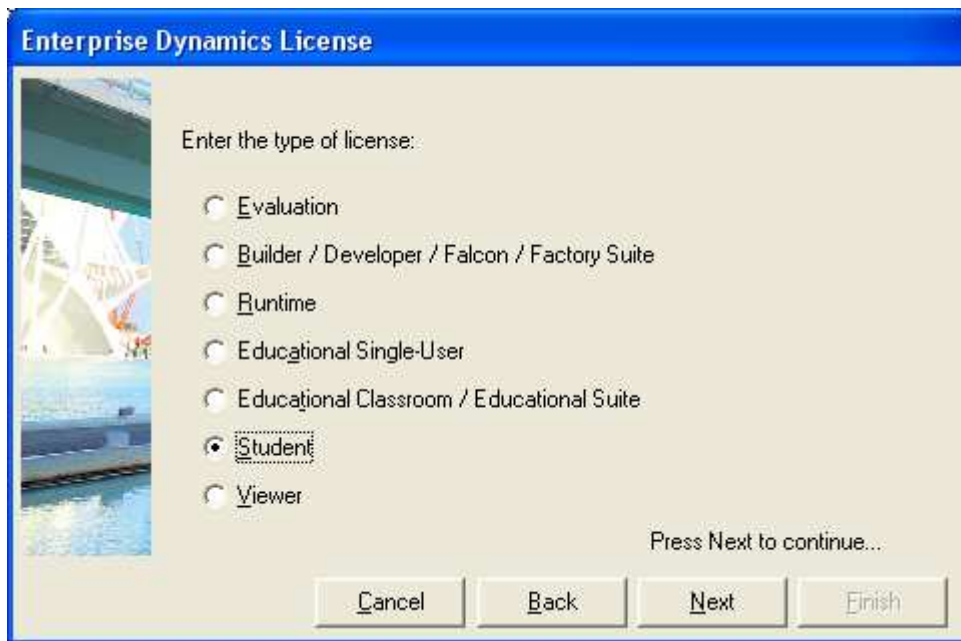
Open the website [www.incontrolsim.com/academy/](http://www.incontrolsim.com/academy/) and go to the Downloads section. Click the link to the Student Version and fill out your personal details in the download form. This includes your name, e-mail address and the name of your school. After submitting the form you will be sent a confirmation message by e-mail.

The confirmation message contains a link. Open the link in your web browser and select the right version of ED. Download and save the newest version except if your teacher has specifically instructed you to download a specific older version.

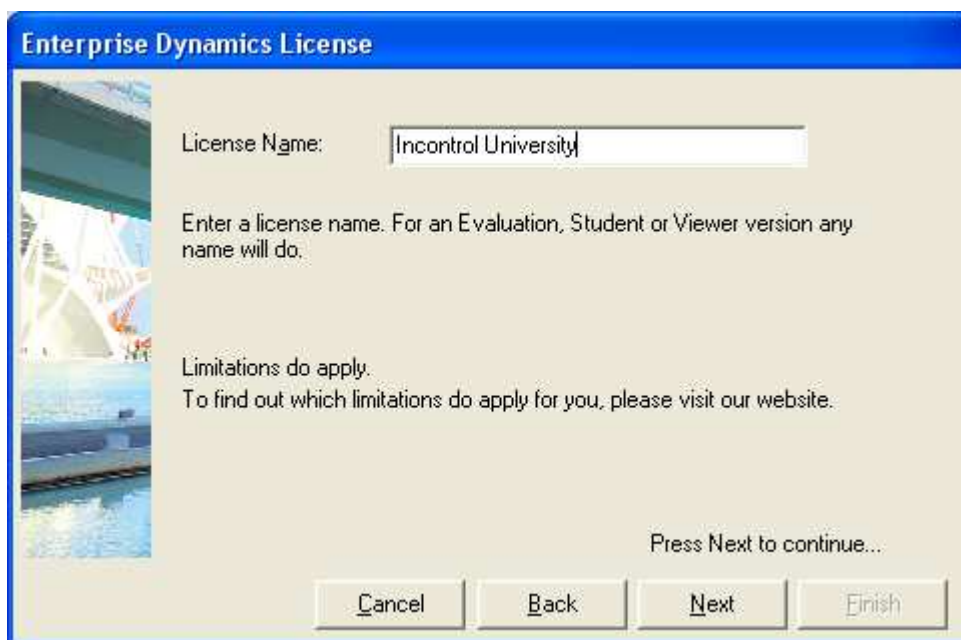
## 1.3 Installing ED

Run the downloaded file and follow the instructions to install ED.

After installing ED will automatically start and show a welcome screen. Click next and agree with the end user license agreement (EULA). On the next screen, select the Student license type and click Next:



On the next screen you need to enter a license name. For a student version any name will do, for example, enter the name of your school:



You do not have to enter any additional product codes, just click Next:



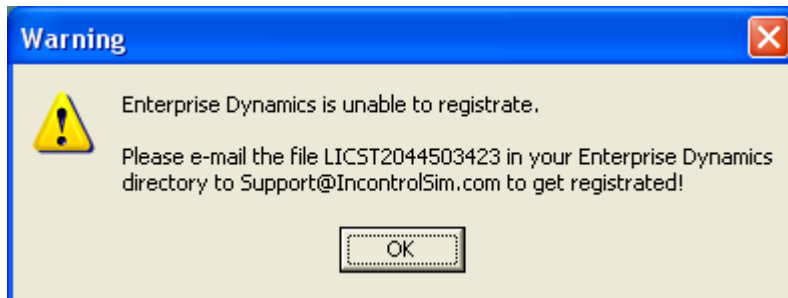
Enter your name and e-mail address to register:



You may get a message like the following, in that case click Unblock.



If you get error messages about the connection like those below, follow the instructions and register by e-mail. The problem is usually caused by a firewall or modem.



After the registration procedure you can start working with ED.



#### **1.4 Running ED for the first time**

When you start ED you can choose which application file (.app) to use. Normally you select Logistics Suite.app. This gives you all features and atoms of ED Logistics.